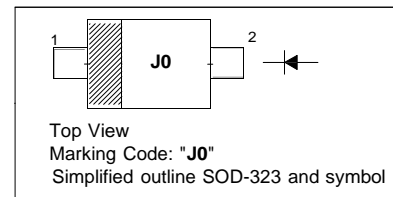


SCHOTTKY BARRIER DIODE

PINNING

PIN	DESCRIPTION
1	Cathode
2	Anode



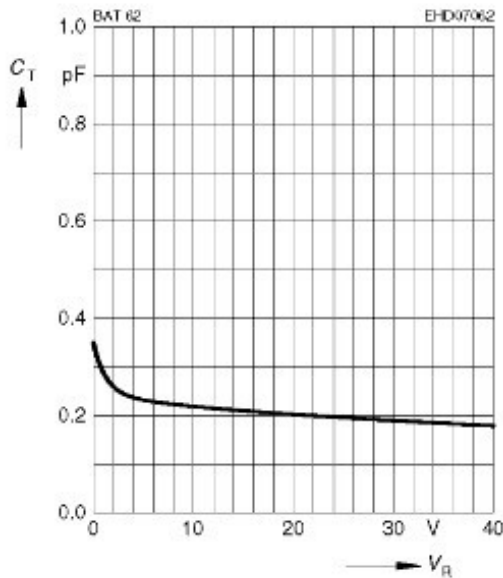
Absolute Maximum Ratings ($T_a = 25\text{ }^\circ\text{C}$)

Parameter	Symbol	Value	Unit
Reverse Voltage	V_R	40	V
Forward Current	I_F	20	mA
Total Power Dissipation	P_{tot}	100	mW
Junction Temperature	T_J	150	$^\circ\text{C}$
Storage Temperature Range	T_{stg}	- 55 to + 150	$^\circ\text{C}$

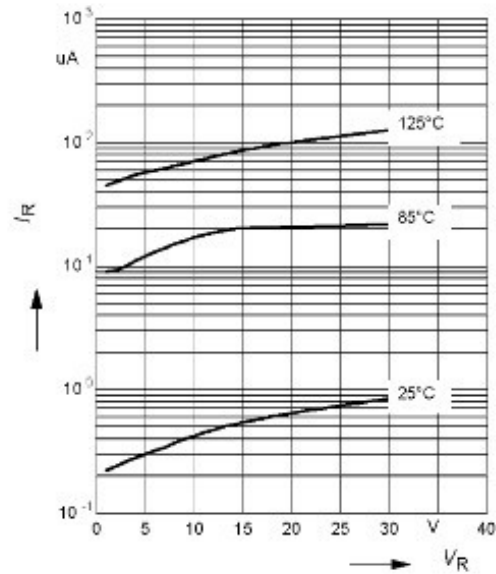
Characteristics at $T_a = 25\text{ }^\circ\text{C}$

Parameter	Symbol	Max.	Unit
Forward Voltage at $I_F = 2\text{ mA}$	V_F	1	V
Reverse Current at $V_R = 40\text{ V}$	I_R	10	μA
Diode Capacitance at $V_R = 0\text{ V}$, $f = 1\text{ MHz}$	C_T	0.6	pF

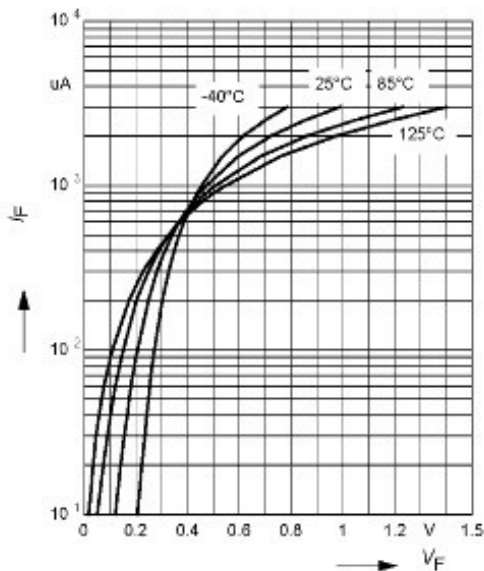
Diode capacitance $C_T = f(V_R)$
 $f = 1\text{MHz}$



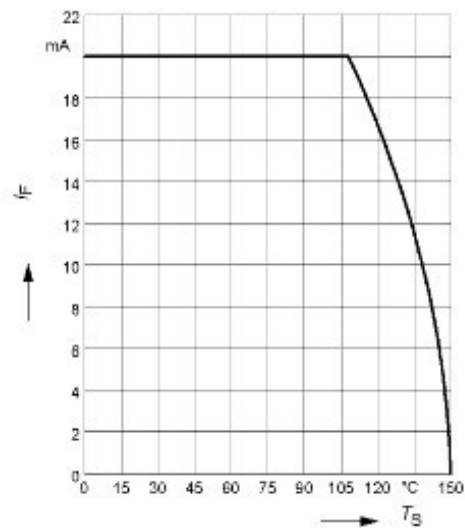
Reverse current $I_R = f(V_R)$
 $T_A = \text{Parameter}$



Forward current $I_F = f(V_F)$
 $T_A = \text{Parameter}$



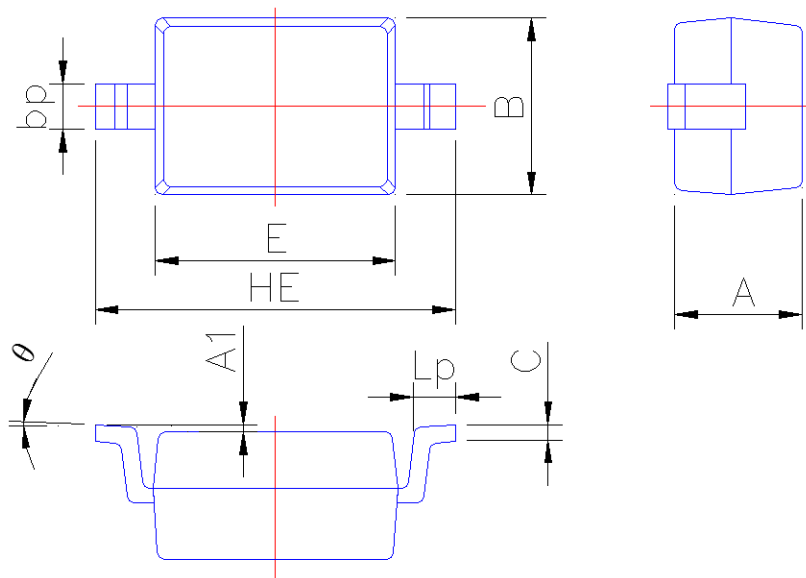
Forward current $I_F = f(T_S)$



PACKAGE OUTLINE

Plastic surface mounted package; 2 leads

SOD-323



Symbol	Dimension in Millimeters	
	Min	Max
A	0.95	1.15
A1	0.010	0.100
B	1.20	1.40
bp	0.25	0.40
C	0.09	0.150
E	1.60	1.80
HE	2.30	2.70
Lp	0.20	0.40
θ	0°	5°